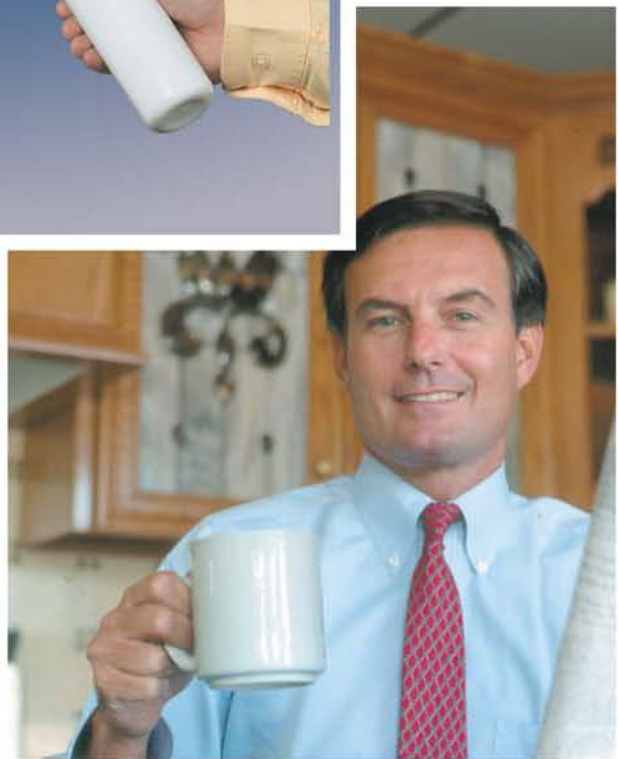


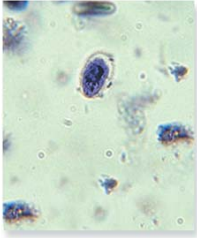
# AquaCera

water filtration technology



**Get the water you want with an AquaCera®  
Quick Change Drinking Water System**

# Many water quality problems.



## Contaminants

Water for drinking, beverages and food preparation should be safe and free from harmful contaminants.



## Turbidity & Color

Cloudy water is due to turbidity, or finely divided particles. Color in water is most often due to dissolved organic matter. These problems result in water that is unpleasant to drink.



## Foul taste & odors

From its passage from clouds to your tap, water comes in contact with many different impurities which can produce foul taste and odors that can ruin the enjoyment of prepared foods and beverages.



## The Answer



## Think again!

Many individuals are buying bottled water because they are concerned about drinking water quality. Bottled water is expensive, and it's very inconvenient. Water produced by RO systems cost pennies a gallon, compared to a dollar or more for bottled water.



# The Solution!

## Reverse Osmosis...

Recognized as a premium technology designed to remove the widest spectrum of contaminants, which may be found in drinking water.

AquaCera® reverse osmosis systems with Kwik-Change™ cartridges are considered the **best** because they are easy to maintain and consistently provide the highest quality water possible!



Cartridge replacement is so simple, even YOU can do it!



## Features and benefits

- Cartridges connect directly to the unit by a simple 1/4 turn.
- Filter housings are eliminated. No mess during replacement.
- Internal valves shut-off flow when cartridges are removed.
- Cartridges have double-o-rings so they won't leak.
- Compact design, so the unit requires less space below the sink!
- All components are an integral part of the unit, which requires fewer tube connections for greater reliability.
- Back-flow prevention valves are installed between the elements, for water quality assurance.

## No fuss, no mess!

Unlike conventional units (shown above), filter housings are not required when using Kwik-Change cartridges.

For this reason, there's no need to shut down the system to remove filter housings, simply to change cartridges or membranes.



RO-PRO storage tanks are only 9" wide to take up less space!



Designer faucet included

## SPECIFICATIONS

Typical rejection rate*	98% (total dissolved solids)
Operating pressure	35 to 100 psi
Cartridge replacement	6 to 12 months based on usage
Membrane replacement	2 years**
Dimensions (unit)	12" x 12" x 3"
Capacity	50 gallons per day
Tank	Plastic



Notice: Do not use with water that is microbiologically unsafe or of unknown quality without adequate disinfection before or after the system.

# Interesting Water Facts

1. Humans largely influence the factors that determine water quality, as they dispose of their waste in water and add all kinds of substances and contaminants that are not naturally present. We now know more than 70,000 water pollutants.
2. About 450 cubic kilometres of wastewater are carried into coastal areas by rivers and streams every year. These pollution loads require an additional 6,000 cubic kilometres of freshwater to dilute the pollution. This amount equals to two-thirds of the world's total stable run-off.
3. Public water supplies must meet or exceed certain standards. The kind of standards that are used differ for each country. Many public water supplies consistently supply water that is much better than the minimum standards.
4. Four litres (1 gallon) of gasoline can contaminate approximately 2.8 million litres (750,000 gallons) of water.
5. Groundwater supplies serve about 80% of the population, whereas up to 4% of usable groundwater is already polluted.
6. There are 12,000 different toxic chemical compounds in industrial use today, and more than 500 new chemicals are developed each year.
7. Over 70,000 different water contaminants have been identified.
8. Each day almost 10,000 children under the age of 5 in Third World countries die as a result of illnesses contracted by use of impure water.
9. Today, drinking water meets over a hundred different standards for drinking water quality.
10. The principal sources of contamination are associated with the post World War II chemical age.
11. If all new sources of contamination could be eliminated, in 10 years, 98% of all available groundwater would then be free of pollution.

Bottled water can be up to 1000 times more expensive than tap water and it may not be as safe.

A person must consume 2 litres of water daily to live healthily. Humans drink an average of 75,000 litres of water throughout their life.

